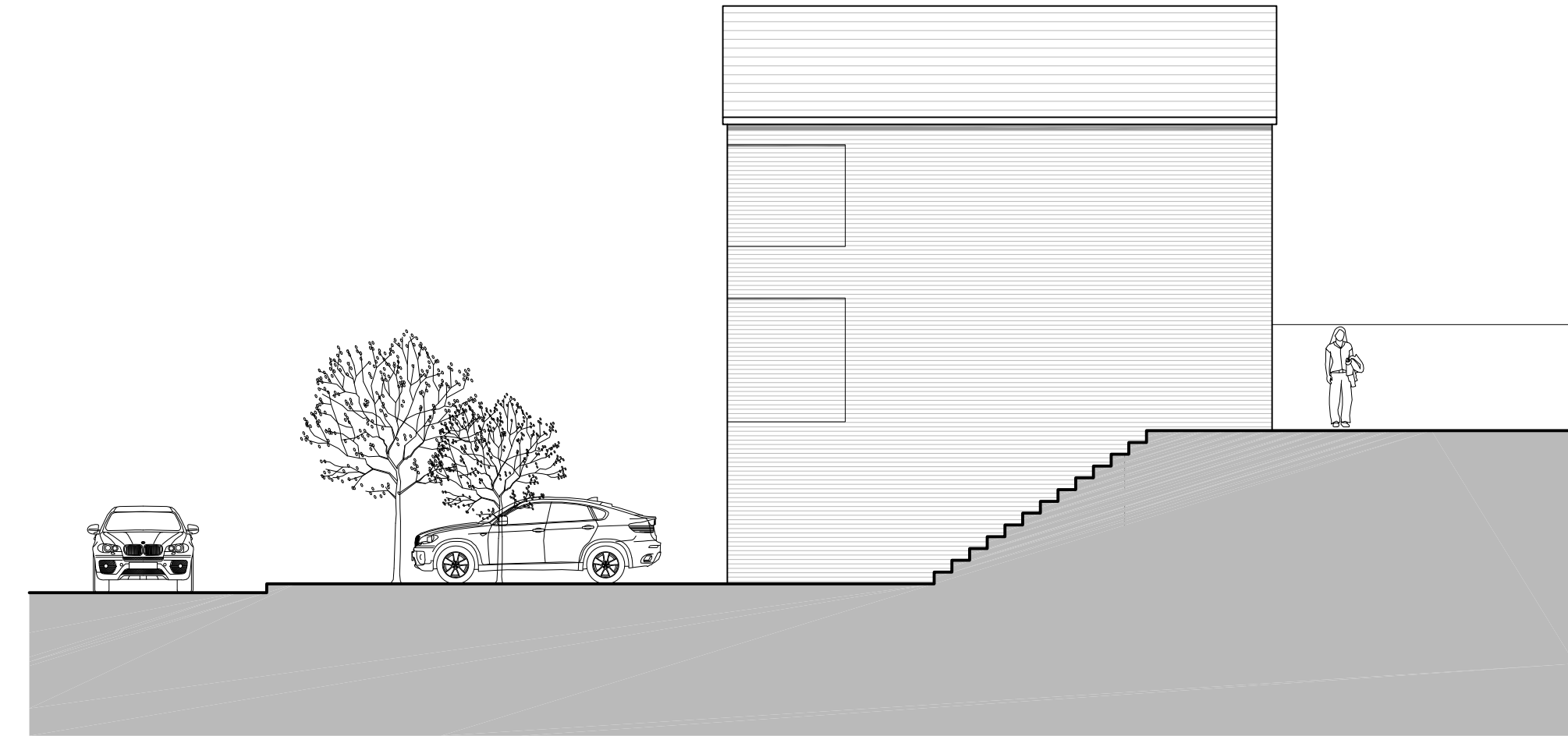


Proposed Front Elevation



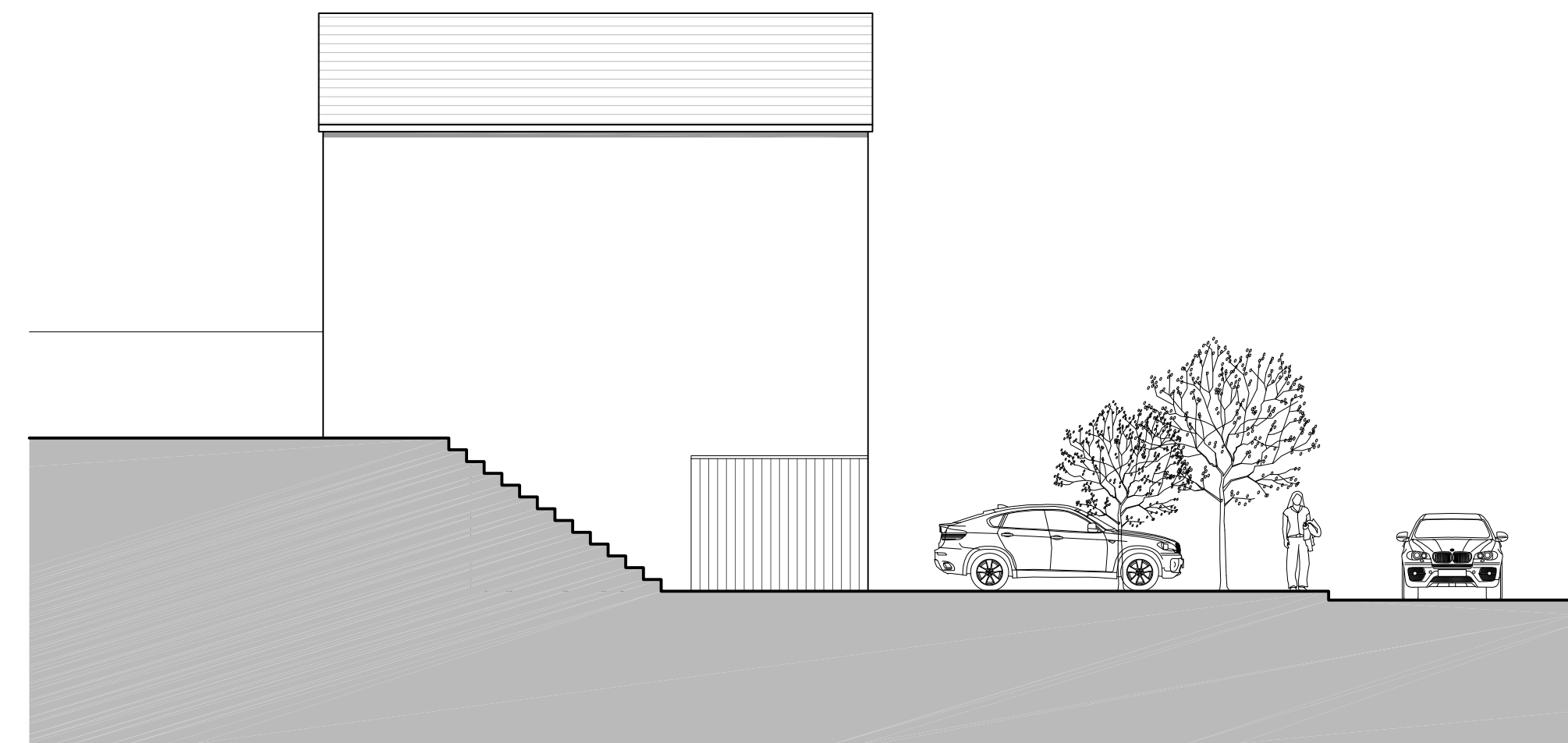
Proposed Side Elevation



Proposed Rear Elevation



Proposed Side Elevation



Materials:

Roof:

- Fibre cement tile, blue/black (Marley Modern or similar to Local Authority approval).

Walls:

- Render, white (Aliva system or similar to Local Authority approval).
- Facing Brickwork, buff/brown (by Terca, or similar to Local Authority approval).
- Composite Cladding, black (by Dura, or similar to Local Authority approval).

Windows:

- Double glazed uPVC windows, black (or similar to Local Authority approval).

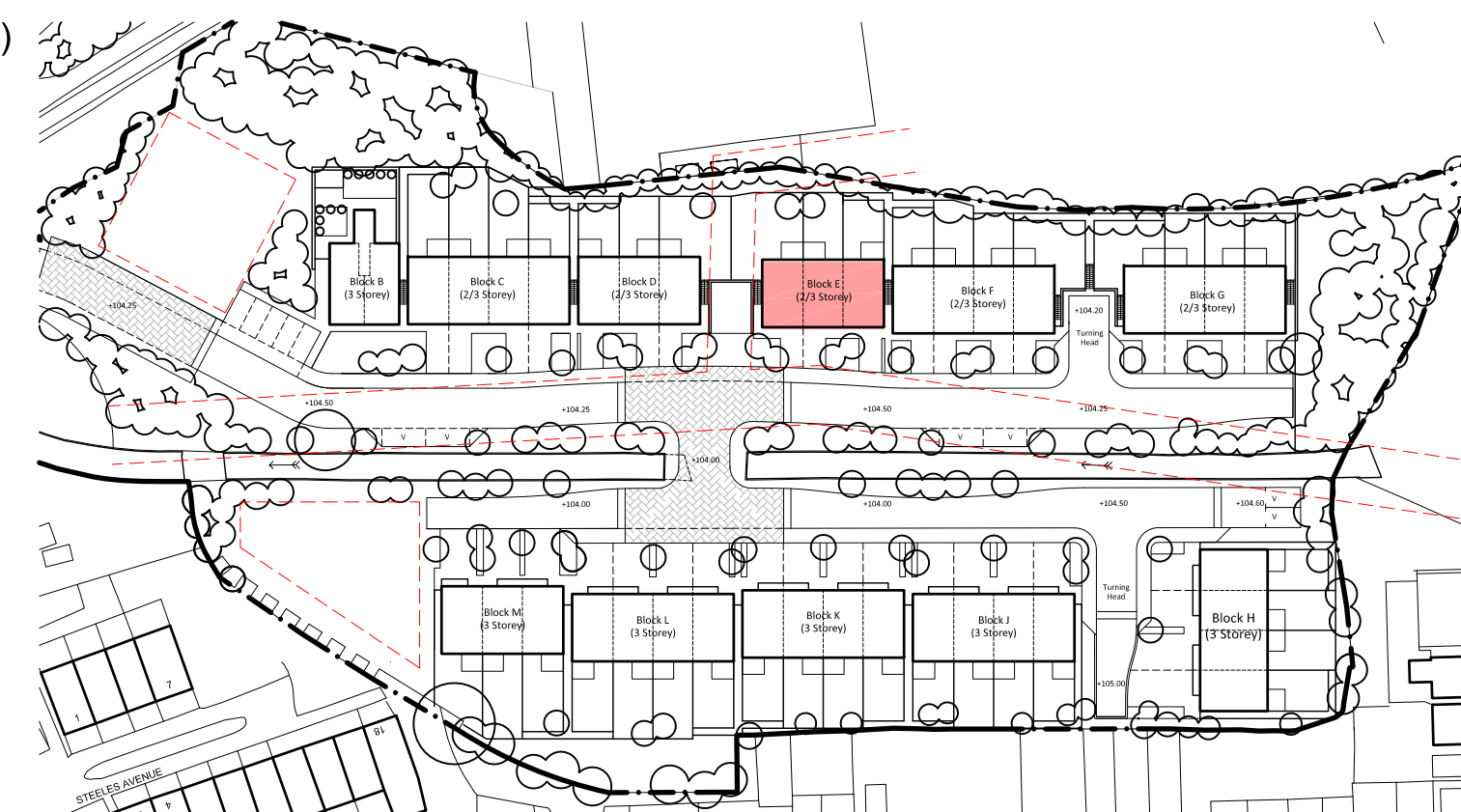
Doors:

- Double glazed uPVC doors, black (or similar to Local Authority approval).
- Garage doors, powder coated to match cladding colour (or similar to Local Authority approval).

Fencing:

- Timber closed-board perimeter fencing (1.8m height).

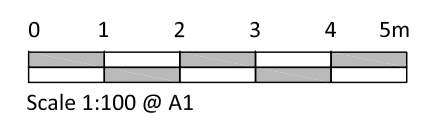
Key Plan (NTS)



Note:
 This drawing should not be scaled unless for planning application purposes. Work to figured dimensions only.
 All dimensions and levels to be checked on site.
 Land registry title and ownership boundaries are produced by Studio KMA using all reasonable endeavours. We cannot be held responsible for scale discrepancy of plans supplied to us.
 Any discrepancies should be reported to Studio KMA at the address below.
 This drawing should not be reproduced without written permission from Studio KMA.

Drawing Amendment:

rev	date	drawn	checked
A	10/07/19	RH	RH
Initial Issue			
-	24/08/18	RH	AT
Initial Issue			



Project Title:
Hyde Brook Street

Drawing Title:
Proposed Elevations (Block E)

Project No.: T758 Drawing No.: P018

Date: 24/08/2018 Scale: 1:100 @ A1

Stage: Stage 3 Revision: A

Drawn By: RH Auth By: AT

Studio KMA Limited
 The Design Studio
 Valley Mills Millgate
 Deoph Oidham OLSDG
 www.studiokma.co.uk

